

# Fashion Clutch

Designed by Whistler Studios

Featuring the Low Country Indigo Collection by Nancy Gere

Size: 14 1/2" x 9"



Check [www.windhamfabrics.com](http://www.windhamfabrics.com) Free Project section to see if there are any pattern updates before you start your quilt project

**WINDHAM FABRICS**

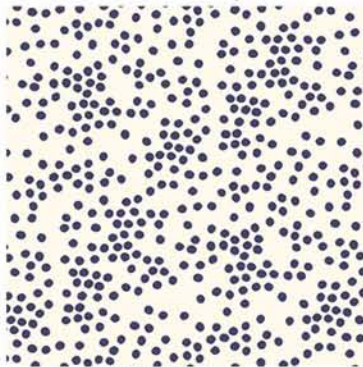
812 Jersey Ave ~ Jersey City, NJ 07310 ~ 201.659.0444 ~ FAX: 201.659.9719  
[www.windhamfabrics.com](http://www.windhamfabrics.com) email: [retail@windhamfabrics.com](mailto:retail@windhamfabrics.com)

# Fashion Clutch

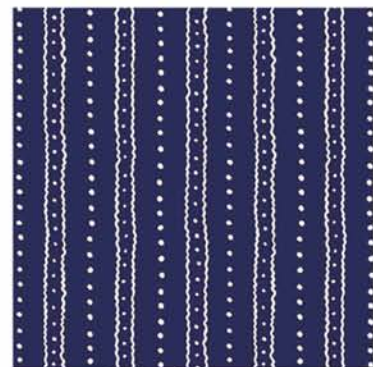
Page 2



40135-1 Navy



40137-2 Linen



40141-1 Navy

## Fabric Requirements:

7/8 yard\*\* 40135-1 Navy for outside of clutch

\*\*allows extra fabric for fussy cutting

2/3 yard 40137-2 Linen for lining

1/2 yard 40141-1 Navy for binding (includes inside pocket)

(1) Magnetic Closure

Fusible Fleece (as Pellon 987) or Bozal In - A - Form Plus

Small piece of woven fusible to make (2) 2" squares to hold magnetic closure

## Cutting Instructions:

Using TOP template provided, tape it to the top of a 15" x 14" rectangle to form the shape of the clutch flap. Tape the BOTTOM template to the bottom of the same rectangle. More instructions are given on the page with the templates.

### 40135-1 Navy

Cut (1) piece from the template fussy cutting the fabric so that the curve of the print lines up with the curve of the flap.

### 40137-2 Linen

Cut (1) piece from the template for the lining.

Cut (1) piece from the template for the fusible fleece.

### 40141-1 Navy

Cut (3) 1 3/4" wide strips cut on bias. Join to create a continuous piece of bias.

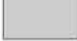
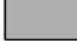
Cut (1) 10" x 10" square in the remaining stripe for inside pocket



# Fashion Clutch

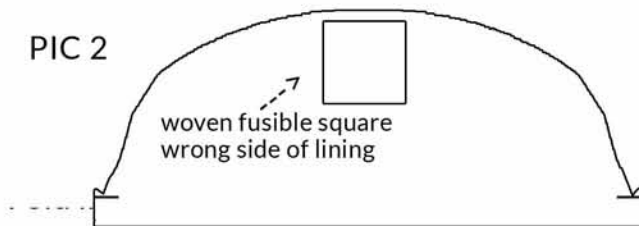
Page 3

## Assembly:

All Seams are 1/4" wide  =outside  = lining

1. Take the pocket square and with right side together, fold in half so the stripes are running from fold to open edge. Stitch the 3 open sides closed leaving a 3" opening for turning. Turn to the right side, press seams flat and slipstitch opening closed.
2. Take lining and place the pocket (folded edge at top) on the right side 9" from the top edge and centered from side to side. PIC 1
3. Edge stitch around the sides and bottom of the pocket, reinforcing the stitch at the top edge. Add a stitch down the middle of the pocket to form two pockets.
4. Take a 2" square of the woven fusible and attach to the wrong side of the lining at the top edge in center. This will help to secure the magnetic snap. PIC 2

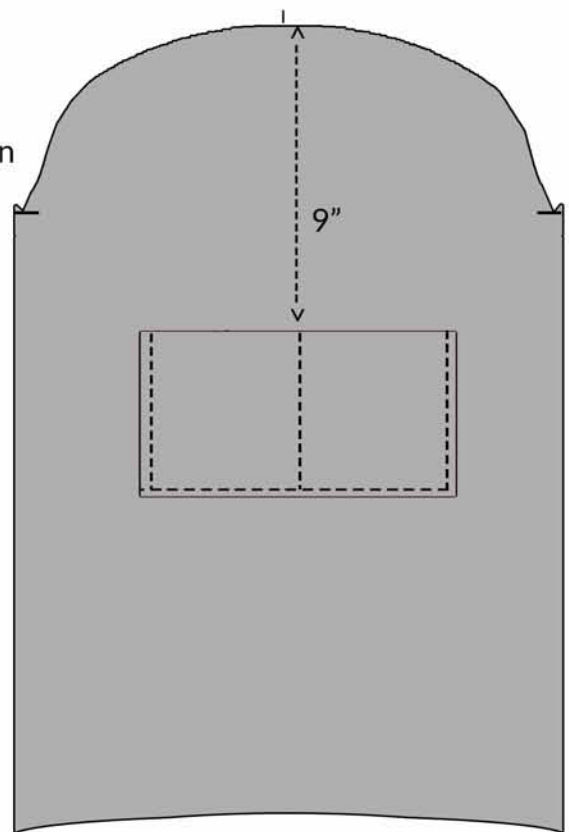
PIC 2



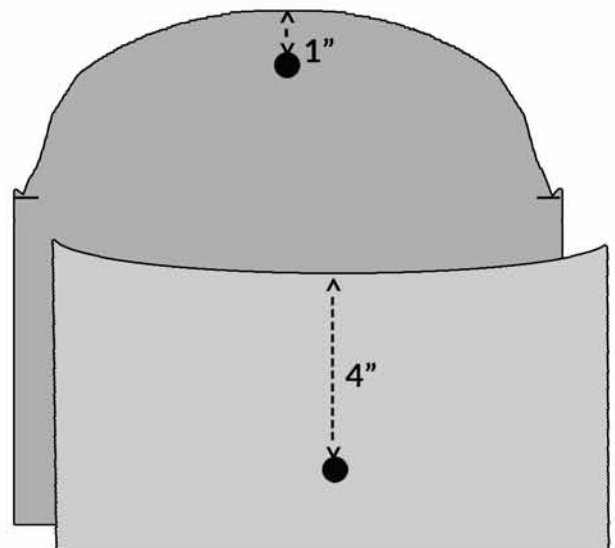
5. Take magnetic snap and place one side about 1" from the top center edge. Following the manufacturer's instructions, attach to the right side of the lining fabric. If you do not have instructions with your closure, follow the online tutorial from Karen Meyers: [www.youtube.com/watch?v=BusguuOK6Rg](http://www.youtube.com/watch?v=BusguuOK6Rg)  
**Note:** For better ease of opening, the prongs of the closure should be perpendicular to the top edge and not parallel as shown in the tutorial.

6. For the other side of the closure, the placement will be about 4" from the top edge of the **outside** fabric of the clutch. Place the second 2" woven fusible square centered over this closure position on **wrong** side of the fabric. PIC 3

PIC 1



PIC 3



# Fashion Clutch

Page 4

7. Place the fusible fleece between the wrong sides of the outside and lining of clutch like a sandwich. Following the manufacturer's recommended instructions, adhere the outside and lining to the fleece.

8. With outside together, fold the clutch so that notch at bottom of the top curve matches the end of the bottom edge. PIC 4

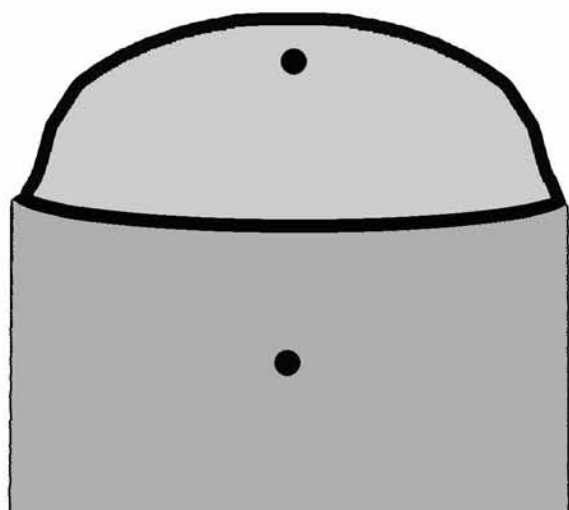
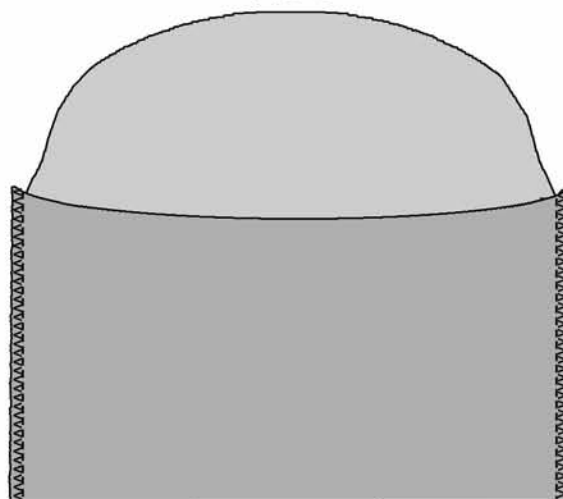
Stitch the side seams closed. To clean finish the seam allowance edges you may serge or cover the raw edges with a tight zigzag stitch. Turn and press seams flat.

9. Create bias tape like you would for a quilt edge.

Place the tape along the curve of the clutch open edges and pin or hand baste to hold in place. The start and stop of the bias tape should be some where on the inside edge of clutch. Cut off any excess length.

Machine stitch it in place and hand slip stitch inside edge to secure. PIC 5

PIC 4



FINISHED CLUTCH

Be sure to visit [www.windhamfabrics.com](http://www.windhamfabrics.com) to see the complete collection and to download this and other Free Projects

# Fashion Clutch

Page 5  
TEMPLATES

